

EQUIPMENT ARMOR



EQUIPMENT ARMOR, INC.

Custom Protection Poly Carbonate Replacement Parts and Overlays

Custom Boom Side Glass Overlay and Replacements

- Equipment Armor Boom Side Glass Overlays are custom cut from 1/4" thick coated polycarbonate.
- Equipment Armor Boom Side Glass Replacements are custom cut from 3/8" coated polycarbonate.
- Both Boom Side Glass Overlays and Replacements are edge primed for easy attachment to existing substrates.



Equipment Armor Custom Dozer Doors



Equipment Armor Inc.

3331 Heritage Trade Drive
Suite 108

Wake Forest, NC 27587

Phone: 919-554-6571

Web Site: www.equipmentarmor.com

Contact: tim@equipmentarmor.com

US Patent Pending #62/260,708

International Patent Pending #PCT/US2016/064077

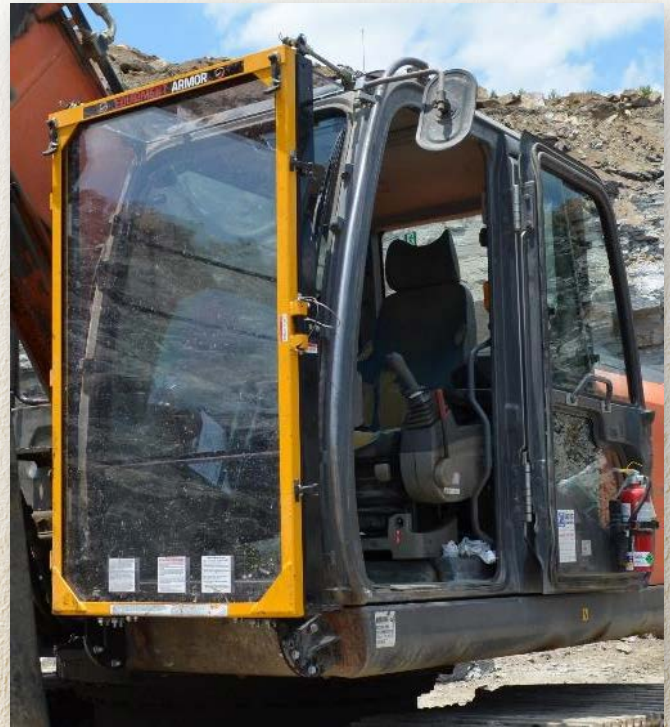
Equipment Armor offers both 3/8" and 1/2" custom bull dozer doors for all makes and models. The customer dozer doors are fabricated from coated polycarbonate and edge primed for easy installation.



919-554-6571

WHY EQUIPMENT ARMOR?

1. Great visibility/High Optics Polycarbonate - unmatched by other guarding.
2. Superior Stopping power – capable of stopping a ½ pound piece of hammer steel at 300 MPH. (UL 752 - Level 1 (9mm) and Level 2 (.357)).
3. Easy to replace shield/ No down time on machine - takes less than 30 minutes.
4. Hinged shield frame door - allows for easy access to windshield for cleaning.
5. Maintains ROPS certification on all machines - bolts directly to existing cab bosses.
6. Easily moved from machine to machine regardless of manufacturer, simply change out mounting brackets.
7. Easy cleaning with mar-resistant coating simply spray with water.
8. Average shield life span of one year plus.



THE EQUIPMENT ARMOR PROTECTION PACKAGE

The Package consists of the patented Equipment ArmorShield, both Sub-Frame and the Shield Frame as well as Custom Mounting Brackets designed to maintain Roll Over Protection (ROPS) certification. The Equipment Armor Frame and Bracket Package is made with structural steel, laser cut and formed to manufacturing specifications and then powder coated. Designed to offer versatility, the frame is universally sized at approximately 36" (W) x 60" (L) allowing transfers among different manufacturers machines simply by changing out the custom bracket system.



THE SUB FRAME

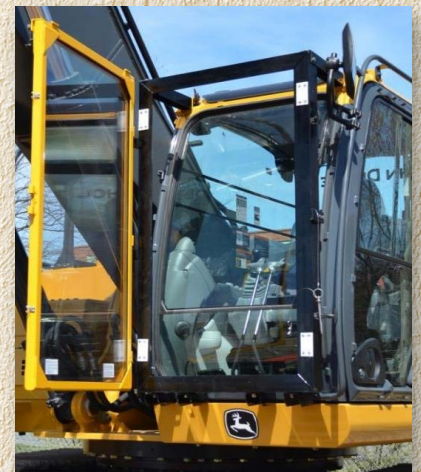
The Sub-Frame is gusseted on all four corners with oversized welds in each of the interior corners for added strength. In addition to the reinforcement gussets the bottom of the sub-frame is reinforced with a doubler-plate that is designed to withstand the stress and eliminate the fatigue being transferred to the bottom of the frame.

CUSTOM BRACKETS

To maintain ROPS certification Equipment Armor developed custom brackets designed to work with individual manufacturers cabs. The brackets bolt directly to the cab bosses and to predrilled holes in the sub-frame allowing for simple installation. For Non-ROPS machines that are lacking cab bosses, Equipment Armor has developed a universal bracket that can be welded directly on to the machine chassis that allows for easy installation of the sub-frame to the cab. Additional support for the top of the cab is achieved through the use of tie rod arms that adjust to the curvature of the individual machine.

THE SHIELD FRAME

As with the Sub Frame all four corners of the Shield Frame have welded gussets for additional strength. The top of the frame is enclosed by a hinged door allowing for simple shield installation/replacement. The shield frame is mounted to the sub-frame by way of 3-barrel hinges that allow for easy removal of the shield frame. The shield frame, once mounted on the barrel hinges, locks into place against the sub-frame utilizing a locking pin and T-handles. The shield frame opens and closes like a door allowing for easy access to the front of the cab.



Equipment Armor, Inc. stocking locations:

Raleigh Office:

3331 Heritage Trade Drive
Suite 108
Wake Forest, NC 27587
Phone: 919-554-6571

Charlotte Office:

10806 Reames Road
Suite V
Charlotte, NC 28269

Richmond Office:

9830 Atlee Commons Drive
Suite 222
Ashland, VA 23005

For additional ordering information please visit our Web Site: www.equipmentarmor.com, or
Contact: tim@equipmentarmor.com

Patent Information: US Patent Pending #62/260,708, International Patent Pending #PCT/US2016/064077